

CHIOS 201

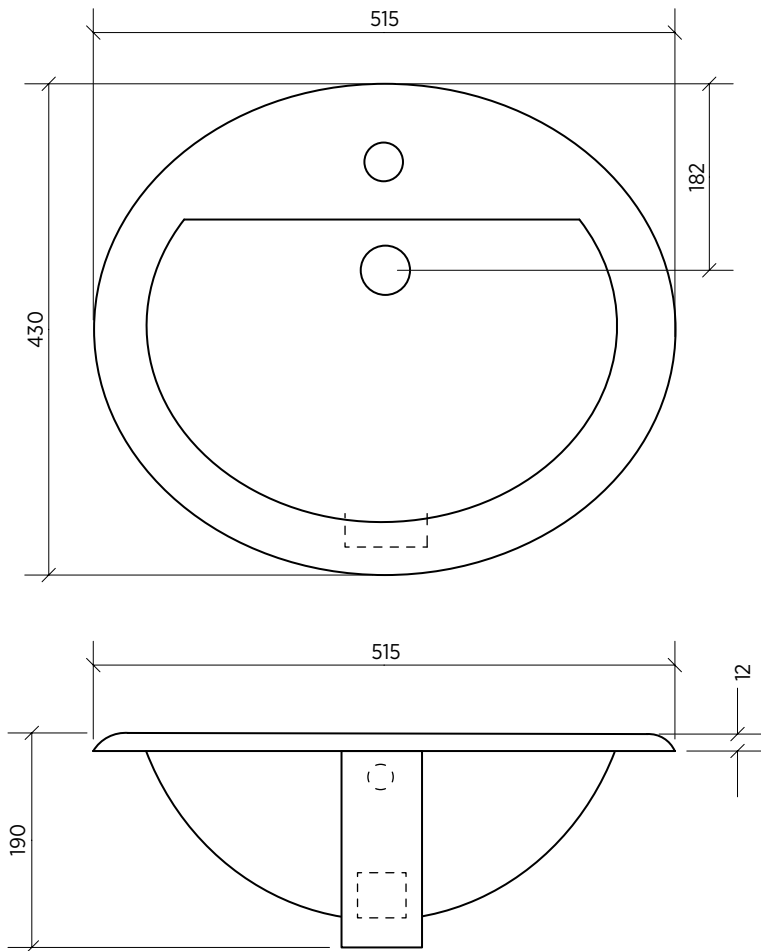
CERAMIC BASIN



Classic oval inset basin

This classic oval inset basin has generous capacity, with the rim sitting on the benchtop and most of the basin sitting under the bench. This contemporary style of basin suits a wide variety of standard benchtops.

ORDER CODE	191467	Chios 201, 1 taphole	Old code: SBC-201
	191468	Chios 201, 3 tapholes	Old code: SBC-201-3T
WASTE	Suits standard 32 mm waste (not supplied).		
CAPACITY	5 litres.		
OVERFLOW	Overflow is located at front of basin.		
MATERIAL	White vitreous china.		
FIXING	Always use the actual basin to verify cutout.		
	Use silicone sealant. Do not use epoxy type adhesives.		



 Basin has integrated overflow

Please note

- All measurements are in millimetres.
- Dimensions are nominal and subject to normal ceramic manufacturing variations of ± 5 mm.
- Fixing: Use silicone sealant. DO NOT USE EPOXY TYPE ADHESIVES.
- Always use the actual basin to verify cutout.
- Specifications may vary without notice as part of our continuous improvement practices.
- Clean with a damp cloth. Do not use abrasive cleaners, liquids or pastes.