

Axis Pin Lever Wall Mount Basin Mixer - 220mm spout

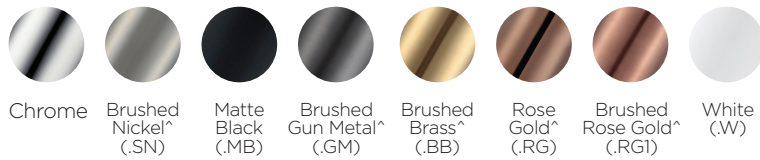
AX16200 - EXTERNAL PART ONLY

WELS: 6 star

Litre/min: 4.5L

WELS License / Reg No: 1483 / T34784

Finishes available:



^ PVD finish

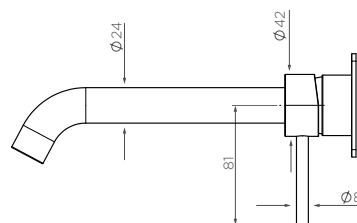
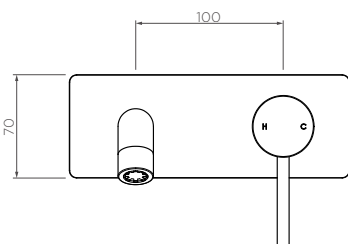
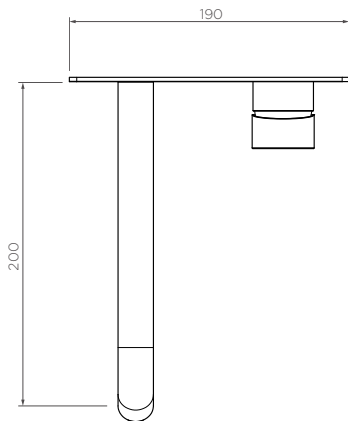


INFORMATION

Pressure Rating 150 - 500kPa Hot and cold water inlet pressures should be equal.

CARE AND MAINTENANCE

- All surfaces should be frequent cleaned with a mixture of mild, pH neutral soap and warm water with a soft cloth
- Do not use abrasive clothes, scouring pads on surfaces
- Do not use harsh cleaning agents i.e. cream cleaners or citrus based cleaners (see cleaning leaflet for comprehensive list)



Requires ARB0120 - Arcisan Universal in-wall body for installation.

WARRANTY
15 years

*Conditions apply.